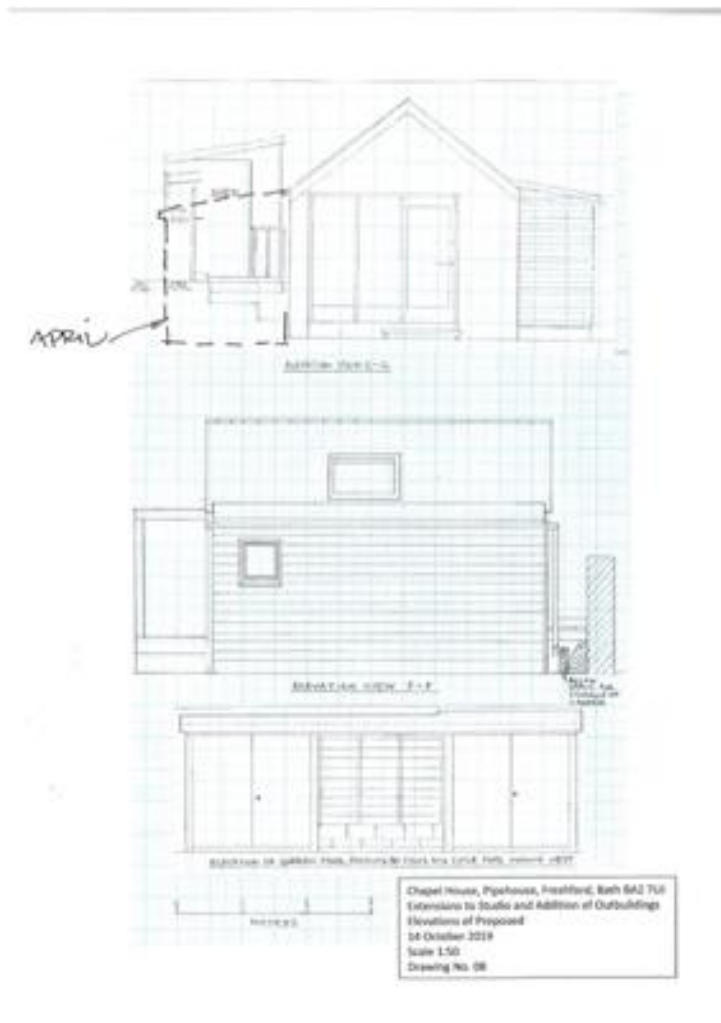


19/04526/FUL October '19

**Chapel House Pipehouse, Freshford, BA2 7UJ.**

I believe the key difference between the proposals as above is; *'a reduction in the existing ground level on the western side of the existing studio'*

The reduction in ground level appears not to be happening now for whatever reason, I attach the elevations highlighting the difference, there is now an unhappy relationship between the main roof / tool shed and possibly some over bearing to the neighbour.



**Recommendation**

Comments only, essentially the council favour the resolution of the original proposals, and it would prefer to minimise the potential loss of any neighbour amenity and maintain (as consented) a less ad-hoc solution.